



ASSOCIATION NEWSLETTER

Volume 9, Issue 1 • December, 2014

MISSION STATEMENT

"Our mission is to promote public safety, protect underground facilities, and minimize service interruptions by processing locate requests and providing damage prevention education. We accomplish this as the communications link between excavators and facility owners as the statewide one-call center in providing efficient and cost effective customer service."

BOARD OF DIRECTORS

Vaughn Shosted
Chairman
Questar Gas*
vaughn.shosted@questar.com

Kyle Kalian
Vice Chairman
CenturyLink*
kyle.kalian@centurylink.com

Mark Stanley
Secretary
City / Municipality Owned Utilities*
mark.stanley@slcgov.com

Leland Myers
Treasurer
Sewer Utilities*
ljmyers@cdsewer.org

Dirk Anderson
Water Utilities*
dirka@jvwcd.org

Julene Martinez
Rocky Mountain Power*
julene.martinez@rockymountainpower.net

Michael Peterson
Power Utilities*
mpeterson@utahcooperatives.org

Bob Checketts
Gas/Oil/Petroleum Gathering
& Transmission Utilities*
robert.checketts@kernrivergas.com

Paul Harvey
Cable Television Utilities*
paul_harvey@cable.comcast.com

Blair Penrod
Long Distance Telephone Carriers /
Fiber Optics Utilities*
blair.h.penrod@verizonbusiness.com

Keith Perkins
Local Telephone Carriers /
Fiber Optics Utilities*
kperkins@utopianet.org

B.J. Holdaway
Advisory Board Member /
Contractors*
bjh@fugal.com

*Denotes Utility Classification Represented

Gary Hansen Retires

By Spence Felsted, Public Relations Coordinator, Blue Stakes of Utah



After more than 13 years as President of Blue Stakes of Utah, the state One Call Center, Gary Hansen retired on July 31, 2014.

I first met Gary 13 years ago when he was asked by the Board of Directors to take the helm at Blue Stakes. Since the first Blue Stakes board meeting, I knew Gary was someone special. His love of people, goal setting, working hard, holding people accountable, teaching and mentoring is unparalleled.

Although I could write pages and pages about his many accomplishments, what I really want people to know about Gary is that he is one of those special people you meet in life who truly makes a difference in people's lives every day. Gary raised the bar and, with his management team, increased association members from 270 to 566 participating utilities. Gary served on many committees and is very connected around the country. He also ran a balanced budget every year and moved Blue Stakes into their own new building. Gary left Blue Stakes in good hands, by building a strong management team and by being an amazing role model.

Many people have benefited from Gary's professional enthusiasm and willingness to share his talents. All of us at Blue Stakes would like to wish Gary well in his retirement and let him know that he will be missed. Gary and his wife (Paulette) left August 4 to serve an 18-month mission in New Mexico for the Church of Jesus Christ of Latter Day Saints.

ASSOCIATION HOLIDAYS

Blue Stakes Notification Center will be closed on the following Association recognized holidays:

| | | | |
|--|--|--|--|
| Christmas Eve 12/24/2014 (Wednesday) | Presidents Day 2/16/2015 (Monday) | Pioneer Day 7/24/2015 (Friday) | Day After Thanksgiving 11/27/2015 (Friday) |
| Christmas 12/25/2014 (Thursday) | Memorial Day 5/25/2015 (Monday) | Labor Day 9/7/2015 (Monday) | Christmas Eve 12/24/2015 (Thursday) |
| New Year's Day 1/1/2015 (Thursday) | Independence Day (observed) 7/3/2015 (Friday) | Thanksgiving 11/26/2015 (Thursday) | Christmas 12/25/2015 (Friday) |



Chairman's Message



Association Members,

It has been my privilege to serve as the chairman of Blue Stakes of Utah Utility Notification Center, Inc. for a number of years. Every year I have the opportunity to address the Association's membership

regarding the financial condition and the overall performance of the Notification Center at its Annual Meeting of Members and appreciate the opportunity of doing so again this year.

Our center has never run better. Through the dedication of our management team and employees, Blue Stakes has become known as one of the best run centers in the country. We continue to operate efficiently providing the services of processing locate requests and damage-prevention education throughout the state of Utah, all for a cost to our members that is comparatively lower than other one-call centers throughout the country.

Some significant milestones we accomplished since we met last are:

- Purchased Norfield Data Products, Inc. along with seven other one-call centers
- Added a Public Relations Coordinator, Spence Felsted to our management team

- Decreased our O&M expense
- Increased our ticket volume by 15%
- Increased our web utilization by 3% to 57%

In 2001, when we incorporated, our membership was 266 members. In 13 years our numbers have more than doubled to 566 members. Our management team continues to find and educate more operators about the safety benefits of belonging to our organization.

Even though we said goodbye to our former President, Gary Hansen, we look forward to our new President, Paul Huntsman and his dedicated management team taking this organization to a new level, while continuing to provide a great product at a reasonable price.

Blue Stakes has been successful and will continue to be successful in the future, thanks to member participation and financial backing. Thank you for your support and please feel free to contact myself, any member of the Board of Directors or the Notification Center's President, Paul Huntsman, if you have any questions, suggestions or concerns.

Sincerely,

Vaughn W Shosted, Chairman

MEMBERS ENCOURAGED TO REVIEW THEIR NOTIFICATION AREA & CONTACT INFORMATION ANNUALLY

Member utility owners typically select their notification areas to follow boundaries, roads or other features on the base map. Since the base map is continually being updated, it is important for member utility owners to review their notification areas to make sure they cover the extent of their underground facilities. Special attention should be given to new subdivisions, city annexations and other growth-related changes. Blue Stakes recommends that members review their notification areas and contact information on an annual basis and more frequently when needed. For help reviewing and modifying your notification area, please contact Blue Stakes' Member Services department at member@bluestakes.org or (801) 208-2103.

Blue Stakes uses map data provided by the State of Utah's Automated Geographic Reference Center (AGRC), which compiles map data created by local and state government GIS departments. This data is official and is typically more current and accurate than data provided by commercial vendors. Blue Stakes uses the NAD83 datum and coordinate system for all map data. For questions about the base map, please contact James Wingate at jamesw@bluestakes.org or (801) 208-2111.

UNIFORM COLOR CODE & MARKING GUIDELINES



Blue Stakes receives questions from operators wanting to find out how they should mark their underground facilities and from excavators wanting to know what the markings mean.

Utah Code 54-8a-5(3) indicates that the underground facilities shall be marked using as a guideline the Uniform Color Code and

Marking Guidelines, Appendix B, published by the Common Ground Alliance.

These guidelines specify the best practices in the marking of underground utilities including the APWA color code, guidelines for excavators to follow when pre-marking the proposed excavation area, and the guidelines for operators to follow when marking their underground facilities.

Blue Stakes encourages all Association members to review their marking practices and incorporate the Common Ground Alliance (CGA) Uniform Color Code & Marking Guidelines, Appendix B. These guidelines can be found on the Common Ground Alliance web site at www.commongroundalliance.com. A copy of these guidelines are also available within Blue Stakes Excavators' Guide that can be found online at Blue Stakes web site www.bluestakes.org or you may obtain a hard copy by contacting Blue Stakes Public Relations at (801) 208-2103, or spencef@bluestakes.org.



Know what's **below.**
Call 811
before you dig.

Blue Stakes will provide damage prevention training classes, free of charge, in the form of safety meetings, workshop presentations, etc. Contact Blue Stakes Public Relations Coordinator at (801) 208-2116, or spencef@bluestakes.org to schedule a training meeting tailored to fit the needs of your organization.

ASSOCIATION MEMBERS (566 — as of November 21, 2014)

| | | | | | |
|------------------------------------|--|---------------------------------|---|---------------------------------------|---|
| Abajo Gas Transmission | Cottonwood ID | Harrisville City | Marathon Oil Company | Pleasant View City | Summit SSD |
| Acme Water | Cove SSD | Hatch Town | Marble Hills Water | Powder Mountain Water & Sewer ID | Summit Water |
| Allen Lateral, Inc. | Crescent Point Energy | Heber City | Marion Water Works | Price City | Sunnyside City |
| Allwest Communications | Cross Hollow Hills Water | Heber Light & Power | Marriott-Slaterville | Price River WID | Sunset City |
| Alpine City | Crown Castle | Helper City | Marysville | Propane & Gas of Wendover | Sunset View Estates Water |
| Altamont Town | Cub River Irrigation | Henefer Town | Mayfield Town | Providence City | Syracuse City |
| Alton Town | Daggett County | Henefer Upper Ditch | McLeod USA | Provo City | Syringa Networks |
| Amalga Town | Dammeron Valley Water | Henrieville Town | Meadow Town | Provo River Water Users | T7 Propane Service |
| American Fiber | Daniel Town | Herriman City | Mendon City | Questar Exploration & Production | Taylor West Weber WID |
| American Fork City | Dansie Water | High Valley Water | Merit Energy | Questar Gas | Taylorville-Bennion ID |
| American Fork City / Fiber Optics | Davis & Weber Canal | Highland City | Metropolitan Water of SLC | Questar Pipeline | Teasdale SSD |
| ATK Launch Systems | Davis County Government | Highland Water | Mid America Pipeline | QEP Field Services | Tesoro Logistics Pipeline |
| AT&T | Daybreak Secondary Water | Hinckley Town | Midvale City | Qwest Worldwide | Tesoro Petroleum |
| AT&T Local Services | Delta City | HLS Communications | Midvale Superfund Site | Raft River Rural Electric | Thanksgiving Point Institute |
| Amerigas | Deseret Generation & Transmission Co-Operative | Holden Town | Midvalley Estates Water | Rainbow Ranches Water | Thompson SSD |
| Anadarko GNB E&P | Deseret-Oasis SSD | Holiday Water | Midvalley ID | Randolph Town | Ticaboo Power, Sewer, & Water |
| Anadarko Petroleum | Deuelcreek Irrigation | Holly Energy Partners | Midway City & Sanitation | RBPUP Group | Timber Lake Property Owners |
| Anadarko Uintah Midstream | Deweyville Town | Holly Refining & Marketing | Midway Irrigation | Redmond Town | Timber Lakes Water |
| Angell Springs SSD | Diamond Valley Association | Holmes Creek Irrigation Company | Milford City | Resolute Natural Resources | Timpanogos SSD |
| Annabella Town | Direct Communications | Honeyville City | Military Installation Development Authority | Richards Irrigation | Tooele City |
| Antimony Town | Dixie Deer SSD | Hooper City | Millville City | Richfield City | Toquerville Town |
| Ashcreek SSD | Dixie Escalante | Hooper Irrigation | Minersville Reservoir & Irrigation | Richmond City | Torrey Town |
| Ashley Valley Water & Sewer | Dixie State University | Hooper WID | Minersville Town | Richmond Irrigation | Tremonton City |
| Aston Energy | Draper City | Horseshoe Irrigation | Moab City | Richville Pipeline | Trenton Town |
| Aurora City | Dry Gulch Irrigation | Howell Town | Moab Irrigation | Rio Virgin Telephone | Tridell Lapoint Water |
| Austin SSD | Duchesne City | Hoytville Pipe Water | Moab Pipeline | River Heights City | Tropic Town |
| Autoliv | Duchesne County WCD | Huntington Cleveland Irrigation | Mona City | Riverdale City | Tropic East Fork Irrigation |
| Avative | EA Engineering, Science & Technology | Huntsville Irrigation | Monroe City | Riverton City | Twin City Power |
| Baja Communications | Eagle Mountain City | Huntsville South Bench Canal | Monte Vista Homes | Rocky Mountain Power | Twin Creek SSD |
| Ballard Water District | East Carbon City | Huntsville Town | Monticello City | Roy City | UAMPS |
| Bear Lake SSD | East Duchesne Culinary WID | Huntsville Waterworks | Moon Lake Electric | Roy WCS | UDOT Region I |
| Bear River Town | Eastland SSD | Hurricane City | Moon Lake Water Users | Running Horse Pipeline | UDOT Region II |
| Bear River WCD | Echo City | Hyde Park City | Morgan City | S M Stoller | UDOT Region III |
| Beaver City | Eden Water Works | Hyrum City | Morgan Secondary Water | Salem City | UDOT Region IV / Cedar City |
| Beehive Telephone | El Paso Gathering | Integra Telecom | Moroni City | Salina City | UDOT Region IV / Price |
| Bell Canyon Irrigation | Elk Ridge Town | Interlaken Mutual Water | Mountain Green Sewer | Salt Lake City Public Utilities | UDOT Region IV/ Richfield |
| Benchland Water District | Elsinore Town | Interlinx Communications | Mountain Springs Water | Salt Lake Community College | Utah County |
| Benson Culinary Water | Elwood Town | Ivins City | Mountain View 1-8 Water | Salt Lake County Operations | Utah Broadband |
| Berry Petroleum | Emery Town | Jensen WID | Mountain View SSD | Salt Lake County / Service Area #3 | Utah County |
| Bicknell Bottoms Culinary Water | Emery WCD | Johnson Water District | Mt Olympus ID | Sand Creek Irrigation | Utah Division of Environmental Response & Remediation |
| Bicknell Town | Emigration ID | Jordan Valley Aquaduct | Mt Pleasant City | Sandy City | Utah State University |
| Big Cottonwood Canyon ID | Empire Electric Association | Jordan Valley WCD | Mt View Irrigation | Santa Clara City | Utah Valley University |
| Bill Barrett Corporation | Encana Gas Services | Jordanelle SSD | Mt Wheeler Power | Santaquin City | Utah Tribe Domestic Water |
| Blanding City | EnerVest Operating, LLC | Joseph Town | Mtn Regional Water SSD | Saratoga Springs City | UTPIA |
| Bluff Water Works | Enoch City | Junction Town | Murray City | Saratoga Springs City / Street Lights | Veracity Networks |
| Bluffdale City | Enterprise City | Kamas City | Murray City Public Services | Schepied Water | Newcastle Business |
| Bona Vista WID | EOG Resources | Kanab City | Mutton Hollow ID | Scipio Town | Vernal City Public Works |
| Boulder Farmstead Water | EP Energy Salt Water Distribution | Kanarraville Town | Myton City | Sciofield Town | Veyo Culinary Water |
| Boundary Springs Water Users | EP Energy Salt Water Distribution | Kane County Roads | Naples City | Settlement Canyon Irrigation | Vineyard Town |
| Bountiful City | EP Energy Salt Water Distribution | Kane County Water | Neola Water & Sewer | Sevier School District | Virgin Town |
| Bountiful Irrigation District | Ephraim City | Kanosh Town | Nephi City | Sherrwood Water | Wallsburg Town |
| Box Elder / Willard Flood Control | Erda Acres Water | Kays Creek Irrigation | Nephi Irrigation | Sigurd Town | Warner LLC |
| Boyer Hill Military Housing (HAFB) | Escalante City | Kaysville City | Newcastle Garden Water Stock | Silver Fork Pipeline | Washington City |
| Bresnan Communications | Eureka City | Kearns Improvement District | Newcastle Water | Simplot Phosphates | Washington Terrace City |
| Brian Head Town | Fairgrounds Pipeline Group | Kennecott Land | Newfield Production | SKYLINE Mountain SSD | Washington WID |
| Bridge Hollow Water Association | Farmington City | Kern River Gas | Newton Town | SLICCAMA | Water Pro Irrigation |
| Bridger Lake LLC | Farr West City | Koosharem Town | New Escalante Irrigation | Smithfield City | Water Pro Irrigation |
| Bridger Valley Electric | Fayette Town & Water | KSL Television | New Harmony Town | Snyderville Basin WRD | WBI Energy Midstream |
| Brigham City | Ferron Canal & Reservoir | KWU Inc. / Kayenta Town | Nibley City | Sorenson Communications | WCWEP |
| C & L Olson Farms | Fidelity Exploration & Production | Laketown Town | Nordic Mountain Water | South Central Utah Telephone | Weber Basin CD |
| Cache Highline Water Association | Fillmore City | Lang Exploratory Drilling | North Carbon Group | South Davis Sewer District | Weber Basin WID |
| Castle Valley SSD | Fillmore Water Users | LaVerkin City | North Davis Sewer | South Davis Water District | Wellington Canal |
| CCI Paradox Midstream | FirstDigital Telecom | Layton City | North Emery Water | South Jordan Fiber Optics | Wellington City |
| Cedar City | FirstWind O&M LLC | LDS Facility Headquarters | North Fork SSD | South Jordan Public Works | Wells Rural Electric |
| Cedar Hills Town | Foundation Energy | Leamington Town | North Logan City | South Ogden City | Wellsville City |
| Centerfield Town | Fountain Green City | Leavitt Group Enterprises | North Ogden City | South Salt Lake City | Wendover City |
| Centerville City | Fountain Green Irrigation | Leeds Domestic Water Users | North Salt Lake City | South Utah Valley Electric | West Bountiful City |
| Centracom Interactive | Francis Town | Leeds Irrigation | North Villages SSD | South Valley Sewer District | West Corinne Water |
| Central Canal & Irrigation | Fremont Waterworks | Lehi City | Oak City | South Weber City | West Haven City |
| Central Davis Sewer District | Frontier Communications | Levan Town | Oakley City | South Willard Water | West Jordan City |
| Central Enterprise Water | Fruit Heights City | Levan Irrigation | Ogden City | Southern Trails Pipeline | West Panguitch I&R |
| Central Iron County WCD | Fruitland SSD | Level 3 Communications | Orderville Town | Southern Utah University | West Point City |
| Central UT Water CD / Utah | Garden City | Lewiston City | Orem City | Spanish Fork City | West Valley City |
| Central UT Water CD / Duchesne | Garkane Energy | Lhoist North America | Orderville Town | Spring City | West Warren-Warren WID |
| Central Valley Town | Garland City | Liberty Irrigation Association | Oquirrh Mountain Water | Spring Lake Water | Western Gas Resources Inc. |
| Central Weber Sewer | Gasco Production | Liberty Pipeline | Ouray Park WID | Springdale Town | White City WID |
| CenturyLink | Genola City | Linde Gases | Pack Creek Water | Springville City | Willard City |
| Chalk Creek Irrigation | Glen Canyon SSD | Linn Energy | Pack Creek Water Users | Sprint Communications | Williams - NWP |
| Charleston WCD | Glenwood Irrigation | Lion's Head P.O. Association | PacifiCorp Energy Hunter | St George City | Winchester Hills Water |
| Chevron Pipeline | Glenwood Town | Loa Town | Power Plant | Magnusbury Park ID | Wolf Creek Water |
| Clarkston Town | Google Fiber | Logan City | Panguitch City | Sterling Town | Woodland Hills Town |
| Clearfield City | Goosenest Water | Long Valley Sewer District | Paradise Town | Stockton Town | Woodland Mutual Water |
| Clearfield Pipe Line Company | Goshen Town | Lyman Water System | Paradox Pipeline | Strata Networks | Woods Cross City |
| Clinton City | Grand Water & Sewer | Lyndyl Town | Paragonah Town | Strawberry High Line Canal | WDDT |
| Cluffward Pipeline | Granger Hunter ID | Maeser WID | Park City Municipal | Summit Gas Gathering | XO Communications |
| Clyde Companies | Grantsville City | Magna Water District | Parowan City | Summit Irrigation Stock | Zayo Fiber Solutions |
| Coalville City | Grantsville Irrigation | Magnusbury Livestock | Parowan South Field | Summit Midstream | Zions Data Services |
| Coastal Plains Energy | Green River City | Manila Town | Payson City | | |
| Colorado Interstate Gas | Gunnison Telephone | Manti City | Perry City | | |
| Comcast | Gunnison City | Manti Irrigation | Phillips 66 Pipeline | | |
| ConocoPhillips | Haight's Creek Irrigation | Manti Telephone | Pine Hollow Water | | |
| Copperton ID | Hanksville Town | Mantua Town | Pine Valley Irrigation | | |
| Corinne City | Hanna Water & Sewer | Manuel Brothers Inc. | Pineview Water Systems | | |
| Cottonwood Heights City | Harmony Farms Water | Mapleton City | Plains Pipeline | | |
| Cottonwood Mutual Water | Harris-Willis Irrigation | | Pleasant Grove City | | |

DAMAGE PREVENTION AWARENESS SEMINARS



Blue Stakes conducts seminars each year to provide damage prevention education for excavators and Association members.

This informative FREE breakfast seminar is designed for everyone involved in preventing damages to buried utility lines. The purpose of the seminar will be to provide education on protecting underground facilities and promoting public safety during excavation.

MEETING AGENDA

7:30 a.m. – 8:00 a.m.

Registration, Displays, & FREE Breakfast

8:00 a.m. – 8:15 a.m.

Pipeline Awareness Presentation

8:15 a.m. – 8:45 a.m.

Century Link Safety Presentation

8:45 a.m. – 9:30 a.m.

Blue Stakes Presentation

9:30 a.m. – 10:00 a.m.

Prize Drawing & Vendor Displays

NOTE – Invitations will be distributed to excavators and Association members during the months of December 2014 & January 2015. For Damage Prevention Awareness Seminars registration go to <http://www.bluestakes.org/events-dpa/>

DATES AND LOCATIONS

Wednesday, January 7, 2015:

VERNAL (Duchesne, Uintah, & Daggett Co)
Uintah Western Park Convention Center
302 East 200 South, Vernal, Utah 84078

Thursday, January 8, 2015:

PRICE (Emery, Carbon, & Wayne Counties)
Carbon County Fairgrounds & Event Center
310 S. Fairgrounds Road, Price, Utah 84501

Tuesday, January 13, 2015:

PROVO (Utah County)
Provo City Library
550 N. University Avenue, Provo, Utah 84601

Wednesday, January 14, 2015:

PROVO (Utah County)
Provo City Library
550 N. University Avenue, Provo, Utah 84601

Thursday, January 15, 2015:

NEPHI (Juab & Sanpete Counties)
County Fair Grounds (Building 14)
400 West Center, Nephi, Utah 84648

Tuesday, January 20, 2015:

SANDY (Salt Lake & Tooele Counties)
Salt Lake Community College / Miller Campus
Karen Gail Miller Conference Center
9750 South 300 West, Sandy, Utah 84070

Wednesday, January 21, 2015:

SANDY (Salt Lake & Tooele Counties)
Salt Lake Community College / Miller Campus
Karen Gail Miller Conference Center
9750 South 300 West, Sandy, Utah 84070

Thursday, January 22, 2015:

PARK CITY (Summit & Wasatch Counties)
The Lodge at Stillwater
(Hwy 40 Exit 8, Mayflower)
1364 W. Stillwater Dr, Heber City, Utah 84032

Tuesday, January 27, 2015:

FILLMORE (Millard, Beaver & Sevier Counties)
American Legion Hall
80 South Main, Fillmore, Utah 84631

Wednesday, January 28, 2015:

CEDAR CITY (Iron, Piute & Garfield Counties)
Cedar City Heritage Center / Festival Hall
105 North 100 East, Cedar City, Utah 84720

Thursday, January 29, 2015:

ST GEORGE (Washington & Kane Counties)
Dixie Center
1835 Convention Center Drive, St George, Utah 84790

Tuesday, February 10, 2015:

LOGAN (Rich, Box Elder & Cache Counties)
Copper Mill Restaurant
615 S. Riverwoods Parkway, Logan, Utah 84321

Wednesday, February 11, 2015:

KAYSVILLE (Weber, Davis & Morgan)
Boondocks
525 S Deseret Drive, Kaysville, Utah 84037

Thursday, February 12, 2015:

KAYSVILLE (Weber, Davis & Morgan)
Boondocks
525 S Deseret Drive, Kaysville, Utah 84037

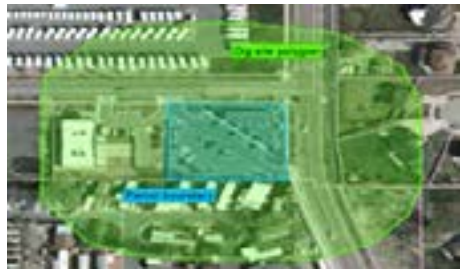
Wednesday, February 18, 2015:

BLANDING (San Juan County)
Blanding Arts and Events Center
711 West 100 South, Blanding, Utah 84511

Thursday, February 19, 2015:

MOAB (Grand County)
Grand Center
182 North 500 West, Moab, Utah 84532

Ticket Marking Instructions vs. Dig Site Polygon



As of November 2014, the Blue Stakes association consists of 566 member utility owners. When an excavator creates a locate request ticket, how does the Blue Stakes contact center know which member utilities should receive the ticket? This is done using geographic information systems (GIS). Each utility owner maintains a polygon (many-sided shape) "notification area" on the Blue Stakes GIS map to indicate the area for

which they want to receive tickets about upcoming excavation activity.

When an excavator creates a ticket, the Blue Stakes contact center employee will draw a "dig site" polygon on the GIS map to cover the location where the excavation will take place. If the dig site polygon touches a utility owner's notification area polygon, Blue Stakes will deliver the ticket to that utility owner.

The dig site polygon does not necessarily indicate the exact area in which utility lines need to be located and marked. The ticket document will provide a text description of the specific marking instructions. In most cases, the dig site polygon will be drawn a bit larger than the actual area to be marked as described on the ticket. The extra size can encompass

the legal parcel boundary along with adjacent easements and roads, while allowing for map projection discrepancies, as shown in the map image of the Blue Stakes office building in Draper. Please note that the dig site polygon is a tool used by the Blue Stakes contact center to determine which utility companies need to receive the ticket. It can be used to provide general location information, but it should not be used to screen tickets as "clear" and should not be interpreted as the area to mark. Instead, use the marking instructions listed on the ticket document. Please contact James Wingate, VP - Contact Center & GIS Operations, at jamesw@bluestakes.org or (801) 208-2111 with any questions.

Visit www.bluestakes.org – Fully Accessible From Your Computer Or Mobile Device.

With ever increasing mobile traffic to our website and the changing online experience, we have redesigned and programmed bluestakes.org. The new responsive website is easier to navigate, can be updated quickly, and is fully mobile friendly.

You can now submit locate requests (tickets) right from the jobsite. Our new website has been optimized for your mobile (smart) phone and tablet allowing you to communicate directly with us at anytime, and from anywhere.



Smart Phone Friendly



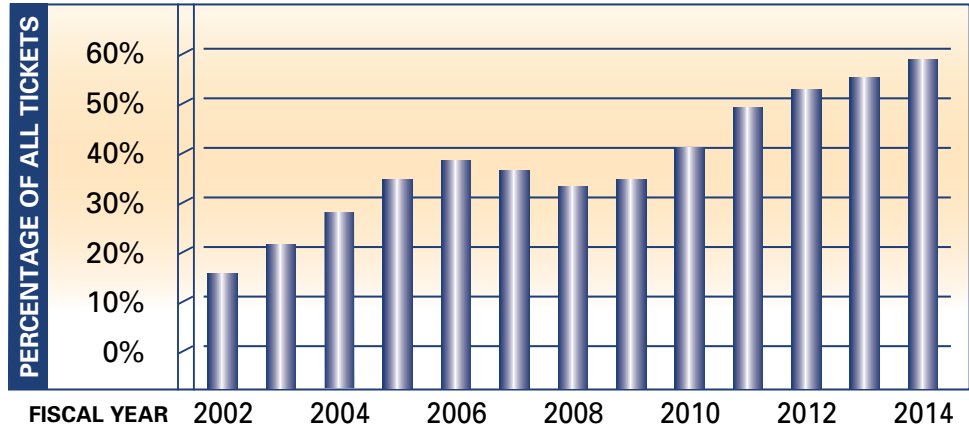
Easy Online Ticketing



Access Anytime, Anywhere

Scan here to view from your mobile device.

ONLINE TICKET SUBMISSION



SPRING ADVERTISING CAMPAIGN

Details are being formulated now for the 2015 Blue Stakes Spring advertising campaign and your support is encouraged.

For organizations dealing with the public, we will have a variety of brochures that encourage safe digging practices. We will also have four foot x 8 foot banners available that proclaim, "Know what's below. Call 811 before you dig."

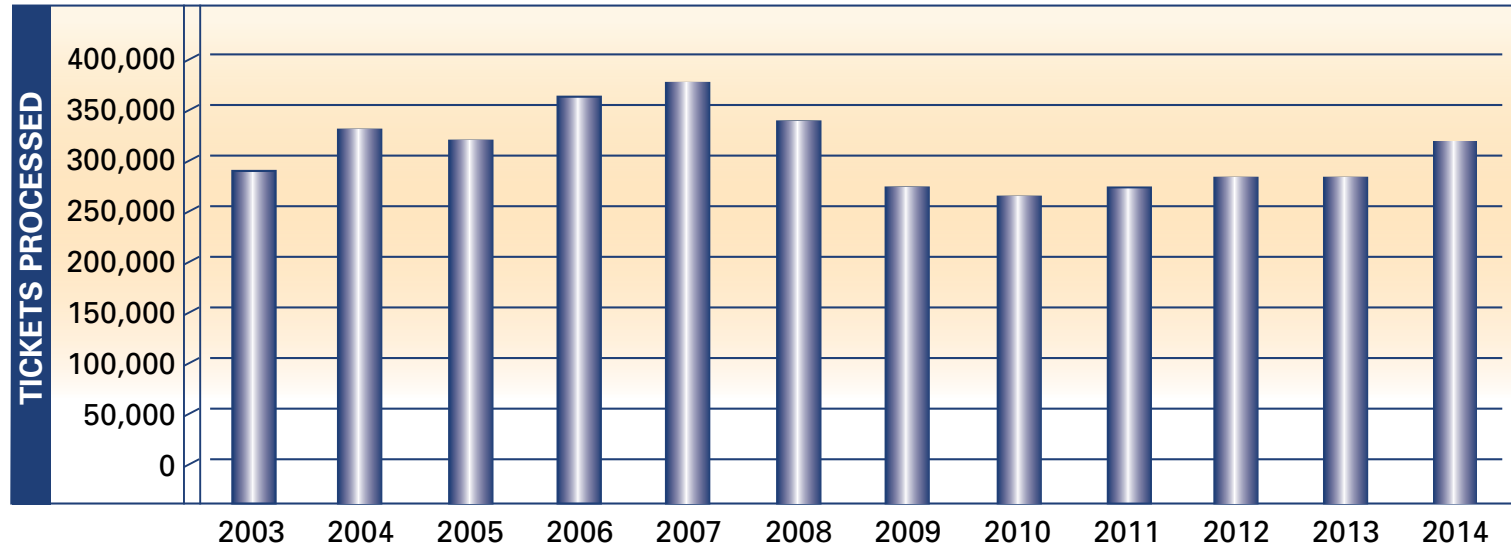
More details on our Spring advertising campaign will be available in early 2015.





Notification Center Statistics

TICKETS PROCESSED - Fiscal Year / July 1 - June 30



PERFORMANCE STATISTICS - Fiscal Year / July 1 - June 30

| | 2003 | 2004 | 2005 | 2006 | 2007 | 2008 | 2009 | 2010 | 2011 | 2012 | 2013 | 2014 |
|---|---------|---------|---------|---------|---------|---------|---------|---------|---------|---------|---------|---------|
| TELEPHONE CALLS | 153,590 | 163,530 | 160,801 | 175,253 | 192,314 | 186,623 | 153,933 | 130,363 | 121,368 | 120,358 | 112,711 | 119,995 |
| ABANDONED CALLS <i>Goal - Less than 5%</i> | 2.11% | 1.97% | 2.00% | 2.42% | 2.85% | 1.60% | 1.38% | 1.70% | 1.69% | 1.57% | 1.95% | 2.16% |
| AVERAGE SPEED OF ANSWER <i>Goal - 30 seconds or less</i> | 21 | 20 | 21 | 28 | 27 | 19 | 15 | 18 | 18 | 17 | 23 | 22 |
| PERCENTAGE OF CALLS ANSWERED WITHIN 40 SECONDS <i>Goal - 80%</i> | 86% | 87% | 86% | 81% | 83% | 89% | 92% | 90% | 90% | 90% | 87% | 87% |

2014-2015 FISCAL YEAR BUDGET

| INCOME | TOTAL | \$1,943,447 |
|------------------------------|-----------|------------------|
| Expenses - Operating | | |
| Advertising Expense | \$ | 140,000 |
| Vehicle Expense | \$ | 21,000 |
| Communications Expense | \$ | 69,600 |
| Insurance Expense | \$ | 32,100 |
| Lease Expense | \$ | 18,000 |
| Office Expense | \$ | 52,880 |
| Building Expense | \$ | 28,240 |
| Bad Debt Expense | \$ | 0 |
| Payroll Expense | \$ | 1,271,924 |
| Professional Fees Expense | \$ | 61,600 |
| Sales & Property Tax Expense | \$ | 8,200 |
| Service Agreement Expense | \$ | 121,620 |
| Travel & Training Expense | \$ | 38,000 |
| Expenses - Capital | \$ | 80,000 |
| Total Expenses | \$ | 1,943,164 |
| Retained Earnings | \$ | 283 |

2014 -2015 FISCAL YEAR AREAS OF EMPHASIS

- 1. Increase % of Online Ticket Submission**
- 2. Expand Education Outreach Activities with new full-time Public Relations Coordinator**
- 3. Enhance Ticket Entry Operating System and Mapping**

Promotional Handouts

Blue Stakes provides, free of charge, the following promotional handouts for distribution promoting the national “5 Steps to Safer Digging” campaign encouraging excavators and the general public to “Call 811 Before You Dig”:

- Excavators’ Guide in English or Spanish
- Key Chains
- Magnets
- Color Code Stickers
- Color Code Information Cards
- “5 Steps to Safer Digging” Video
- CGA Best Practices
- Safe Digging Partner Stickers

To request any of the items listed, contact Blue Stakes Member Services Department at (801) 208-2103, or member@bluestakes.org.



Safe Digging Partners Wanted

Blue Stakes would like to urge all our members to display the new Call 811 Before You Dig Safe Digging Partner stickers on all equipment used in the field. These new stickers promote the 811 phone number and show everyone that your organization supports safe digging practices.

To get these full-color stickers for your business, contact Spence Felsted at the Blue Stakes of Utah office, (801) 208-2116. Call today!

AFTER HOURS EMERGENCY ON-CALL PROGRAM

www.bluestakes.org

(801) 554-7747

Blue Stakes provides Association members with an After Hours Emergency Program designed to provide names and contact information of other member utilities located around an emergency dig site. This information is provided either through Blue Stakes’ web site or by calling Blue Stakes’ after hour’s emergency on-call phone number.

Association Members are encouraged to access after hour emergency contact information using the Utility Contact Information Lookup application found under the Members section on Blue Stakes website at www.bluestakes.org. Please contact Blue Stakes Member Services Department at (801) 208-2103, or member@bluestakes.org if assistance is needed with this on-line application.

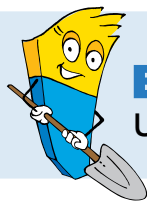


For those Association members without access to the Internet, Blue Stakes offers an After Hours Emergency On-Call phone number to obtain after hour emergency contact information – (801) 554-7747. This program is only available on weekdays from 5:00 p.m. – 7:00 a.m. and on Saturdays, Sundays, and Holidays.

Through one of these two methods, Blue Stakes will provide the emergency contact information of Association members that may have underground facilities in the vicinity of an emergency dig site. No locate request assignment (LRA) number will be generated.

It is the responsibility of the entity performing the emergency excavation to contact all utility owners in the vicinity.

**Know what's below.
Call 811 before you dig.**



BLUE STAKES OF UTAH
UTILITY NOTIFICATION CENTER, INC.

Know what's **below.**
Call 811 before you dig.



Know what's below.
Call 811
before you dig.

NOTIFICATION CENTER CONTACT INFO

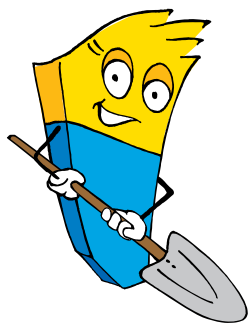
Location: 148 E 13200 S Draper, Utah
Mailing Address: P.O. Box 1517, Draper, Utah 84020-1517
Locate Requests: 811 • (800) 662-4111 • (801) 208-2100
Administration: (800) 662-7836 • (801) 208-2101
Administrative Office Hours: Mon-Fri, 8 a.m. to 4:30 p.m.
Fax: (801) 208-2102 • **Website:** www.bluestakes.org

NOTIFICATION CENTER MANAGEMENT

Paul Hunstman, *President* - (801) 208-2112 / paulh@bluestakes.org
James Wingate, *Vice President, Contact Center & GIS Operations* - (801) 208-2111 / jamesw@bluestakes.org
Sherrie Bowman, *Member Services Coordinator* - (801) 208-2113 / sherrieb@bluestakes.org
Russ Stacey, *IT / GIS Technician* - (801) 208-2114 / russs@bluestakes.org
Spence Felsted, *Public Relations Coordinator* - (801) 208-2116 / spencef@bluestakes.org

www.bluestakes.org

BLUE STAKES OF UTAH
UTILITY NOTIFICATION CENTER, INC.
P.O. BOX 1517 • DRAPER, UTAH 84020-1517



**ASSOCIATION
NEWSLETTER
ENCLOSED**

PRSR STD MAIL
U.S. Postage
PAID
DRAPER, UT
Permit #49